

# SoLink-Lite<sup>®</sup> IP-PBX Appliance

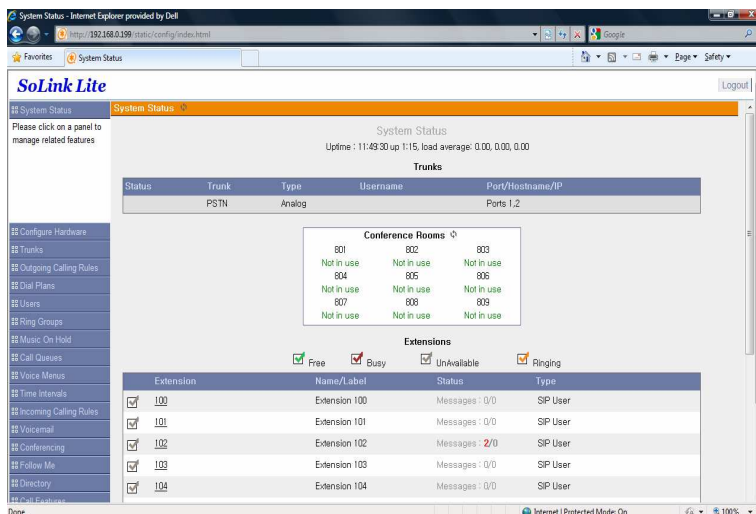
SoLink Lite is an ultra low-cost, embedded IP-PBX solution, supporting up to 8 FX0/FXS ports. This makes it ideal for SOHO, SMB (small and medium business), or branch office uses. SoLink Lite is built upon the leading edge Asterisk-based IP-PBX appliance series from ATCOM Technology, with enhanced Chinese language (Mandarin and Cantonese) support, preset configuration for novice users, as well as other bug fixes.

SoLink Lite can easily be integrated with our enterprise-grade SoLink IP-PBX Communication System to form a complete IP-PBX solution for head/branch office telephone network.



## BENEFITS

- offer a low-cost IP-PBX solution for small and medium business, SOHO, or branch office uses.
- based on standard-based technologies (i.e. SIP, G.711, etc) and open-source platforms such as Linux and Asterisk. This means no more lock-in to a single vendor.
- ultra-low power consumption ( < 5W in idle state)
- free intra-network calling among geographically dispersed offices (eliminate long-distance charge)
- single network infrastructure for both voice and data communication, thus resulting in cost savings in installation, configuration, and management
- enable mobile workforce and remote staff to connect to the PBX seamlessly as if they are in the office
- easier to expand (no hardware upgrade required for adding extensions)



## FEATURES

### Call Features

- automated attendant
- operators
- extension with follow-me support
- call group (or extension group) with group mailbox
- voicemail with email message notification
- call transfer
- call group pickup
- call parking
- music on hold
- conference bridge
- automatic call distribution (ACD)
- directory access
- outbound calling via PSTN or VoIP
- trunk fail-over support
- multiple user call privileges
- IVR support
- peer IP-PBX support
- call details records
- multiple language support (English, Cantonese, Mandarin, French, and Spanish; only one language may be active at a time)
- web-based configuration
- firmware upgradeable via web interface

### Telephony Interoperability

- FXS / FXO
- Loopstart
- Groundstart
- Kewlstart

### Protocols

- SIP (Session Initiation Protocol)
- IAX™ (Inter-Asterisk Exchange)

### Codecs

- G.711 (A-Law &  $\mu$ -Law)
- G.729 (optional)
- GSM
- Speex

### Hardware

- CPU: 400MHz Blackfin 532 Chip
- NAND Flash 256M
- SDRAM 64M

### Interface

- 1 x Power Port
- 1 x RJ45 Port
- 1 x MMC/SD Slot (IP04/08 only)
- 1 x RS232 Port (IP01/02 only)
- Up to 8 FXO/FXS Ports

## FEATURE COMPARISON (SOLINK-LITE vs SOLINK)

	SoLink-Lite	SoLink
Number of Extensions	Up to 32	Up to 500
Telephony Interface	Up to 8 FXO/FXS	Up to 4 T1/E1
Multi-tenant support	X	√
Auto-attendant	√	√
Primary and backup Operator	primary only	√
public and private extension with coverage support	public extension only	√
follow-me	√	X
call group (or extension group)	√	√ (enhanced)
voicemail with email message notification	√	√
intercom and paging	X	√
DISA	X	√
music on hold	√	√
conference bridge	√	√ (enhanced)
ACD	√ (basic)	√ (enhanced)
Directory Listing	phone access	web access
Call Privileges	√	√
IVR	√	√
T.38 IP Fax support	X	√
Fax-to-email	X	√
multiple language support	√ (one active language only)	√
Call recording	X	√
Cost	Very Low	Moderate

## ABOUT LINKSOFT TECHNOLOGIES LTD

Linksoft Technologies Ltd. is a Hong Kong based corporation specialized in providing telecom solutions to service providers and enterprises. Our primary business includes voice-over-IP (VoIP) products such as H.323 Gatekeeper, Gateway, and IP-PBX, as well as providing customized software development and system integration services to our clients.

### Linksoft Technologies Ltd

Tel: +852 3405 8729

Fax: +852 2508 1203

[sales@linksoft.com.hk](mailto:sales@linksoft.com.hk)

<http://www.linksoft.com.hk>